



333 Bayview Avenue
Amityville, New York 11701
For Sales and Repairs, (800) 645-9445
For Technical Service, (800) 645-9440
Publicly traded on NASDAQ Symbol: NSSC
© NAPCO 2010



GEMC-BSLC-4PT

Four Point Expander

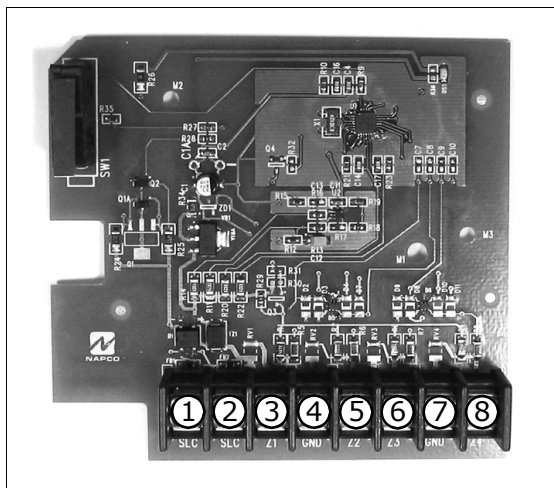
DATA SHEET

WI1900 09/10

GENERAL DESCRIPTION

The GEMC-BSLC-4PT is an addressable four point Burglary expansion module designed for use with the GEMC-BSLC addressable Burglary interface. Terminals are provided for four supervised zones supporting normally-closed or normally-open contacts.

Each expansion module has a unique factory-programmed code (printed on the circuit board and on a label located on the rear case) that distinguishes itself to the receiver. **(Note:** See control-panel instructions for entering this six-digit hexadecimal code into the panel;



Terminal Description:

- | | |
|--------------------|--------------------|
| 1 = SLC Loop, | 5 = Zone Input #2, |
| 2 = SLC Loop, | 6 = Zone Input #3, |
| 3 = Zone Input #1, | 7 = Ground, |
| 4 = Ground, | 8 = Zone Input #4 |

be sure to enter all numbers and/or letters, including leading zeros, if any).

SPECIFICATIONS

Electrical Ratings

Input Power: 13.6-16.3VDC, 3mA supplied by GEMC-BSLC control unit.

Output Power:

Zone Loop Ratings: 16V, 0.31mA, 0.34mA short per zone.

Maximum Zone Loop Resistance: 300 ohms.

Maximum Wiring Length: 3000' (#16 AWG). Refer to GEMC-BSLC documentation (WI1648) for complete wiring information.

Operating Temperature: 32° to 120°F (0° to 49°C)
Refer to PCD-Windows Quickloader download software's calculation tools for 24V standby current calculation.

PHYSICAL

Dimensions (HxWxD): 3⁵/₈" x 7" x 1⁵/₈"

AGENCY LISTINGS

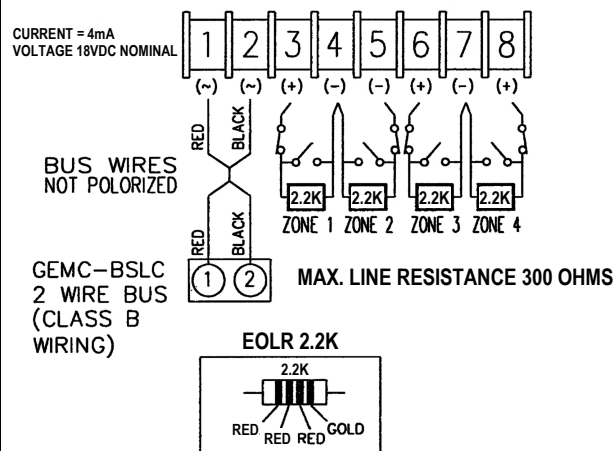
UL365: Police Station Alarm Units
UL609: Local Burglar Alarm Units and Systems
UL1023: Household Burglar Alarm System Units
UL1610: Central Station Burglar Alarm Units
NFPA 72 National Fire Alarm Code
Security Industry Association (SIA) False Alarm Reduction Standard CP-01
FM Approval: (Pending)

ORDERING INFORMATION

GEMC-BSLC-4PT: Addressable SLC Commercial Burg Device - 4 Point Input Expansion Module.

GEMC-BSLC-4PT WIRING DIAGRAM

WIRING AND PROGRAMMING INFORMATION



Wiring Diagram